

# Plug-In Frequency Mixer

## SRA-6+

Level 7 (LO Power +7 dBm) 0.003 to 100 MHz



Generic photo used for illustration purposes only

CASE STYLE: A01

**+RoHS Compliant**  
The +Suffix identifies RoHS Compliance. See our web site for RoHS Compliance methodologies and qualifications

### Maximum Ratings

Operating Temperature	-55°C to 100°C
Storage Temperature	-55°C to 100°C
RF Power	50mW
IF Current	40mA

Permanent damage may occur if any of these limits are exceeded.

### Pin Connections

LO	8
RF	1
IF	3,4 <sup>^</sup>
GROUND	2,5,6,7

<sup>^</sup> pins must be connected together externally

### Features

- excellent conversion loss, 4.58 dB typ.
- high L-R isolation, 45 dB typ. L-I isolation, 40 dB typ.
- rugged welded construction
- hermetic

### Applications

- VHF TV
- defense & federal communications
- radio astronomy

### Electrical Specifications

FREQUENCY (MHz)		CONVERSION LOSS (dB)				LO-RF ISOLATION (dB)			LO-IF ISOLATION (dB)								
LO/RF	IF	Mid-Band		Total	L	M	U	L	M	U							
$f_L$ - $f_U$		$\bar{X}$	$\sigma$	Max.	Max.	Typ.	Min.	Typ.	Min.	Typ.	Min.						
.003-100	DC-100	4.58	.05	7.5	8.5	60	50	45	30	35	25	60	45	40	25	30	20

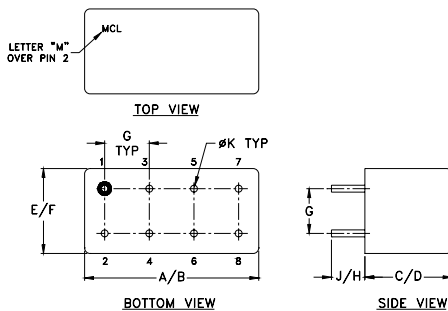
1 dB COMP.: +1 dBm typ.

L = low range [ $f_L$  to  $10 f_L$ ]  
m = mid band [ $2 f_L$  to  $f_U/2$ ]

M = mid range [ $10 f_L$  to  $f_U/2$ ]

U = upper range [ $f_U/2$  to  $f_U$ ]

### Outline Drawing



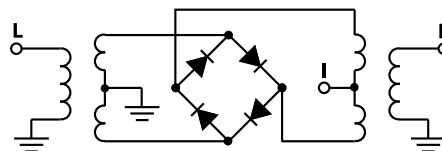
### Outline Dimensions (inch/mm)

A	B	C	D	E	F
.770	.800	.385	.400	.370	.400
19.56	20.32	9.78	10.16	9.40	10.16
G	H	J	K	wt	
.200	.20	.14	.031	grams	
5.08	5.08	3.56	0.79	5.2	

### Typical Performance Data

Frequency (MHz)		Conversion Loss (dB)	VSWR RF Port (:1)	Frequency (MHz)	Isolation L-R (dB)	Isolation L-I (dB)	VSWR LO Port (:1)
RF	LO	LO +7dBm	LO +7dBm	LO	LO +7dBm	LO +7dBm	LO +7dBm
0.25	30.25	4.69	1.18	0.25	87.94	69.25	2.72
0.50	30.50	4.70	1.21	2.20	88.51	67.15	2.60
1.00	31.00	4.72	1.23	5.13	80.05	62.74	2.56
2.00	32.00	4.71	1.23	10.00	74.49	58.28	2.48
4.00	34.00	4.72	1.25	30.00	65.04	46.76	2.43
6.00	36.00	4.75	1.26	35.00	61.86	45.54	2.42
8.00	38.00	4.77	1.25	40.00	58.66	43.62	2.43
10.00	40.00	4.77	1.24	45.00	62.82	41.15	2.44
15.00	45.00	4.75	1.24	49.00	62.74	40.69	2.45
19.00	49.00	4.72	1.23	53.00	59.34	40.12	2.47
23.00	53.00	4.69	1.20	57.00	55.11	40.91	2.50
31.00	61.00	5.04	1.19	61.00	51.93	41.11	2.55
39.00	69.00	5.21	1.17	65.00	50.11	39.64	2.58
51.00	81.00	5.29	1.22	69.00	48.56	38.35	2.62
61.00	91.00	5.51	1.37	73.00	47.39	36.57	2.65
67.00	97.00	5.71	1.44	81.00	45.06	33.06	2.70
70.00	100.00	5.80	1.46	85.00	44.27	31.87	2.74
85.00	115.00	5.84	1.41	92.50	43.42	30.32	2.89
92.50	122.50	5.90	1.24	96.25	43.22	30.02	2.98
100.00	130.00	5.93	1.12	100.00	42.87	30.05	3.06

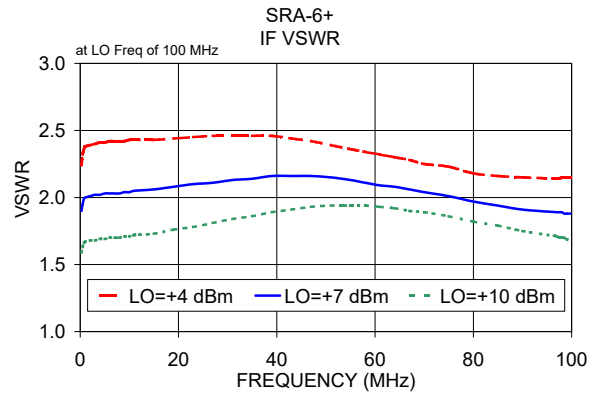
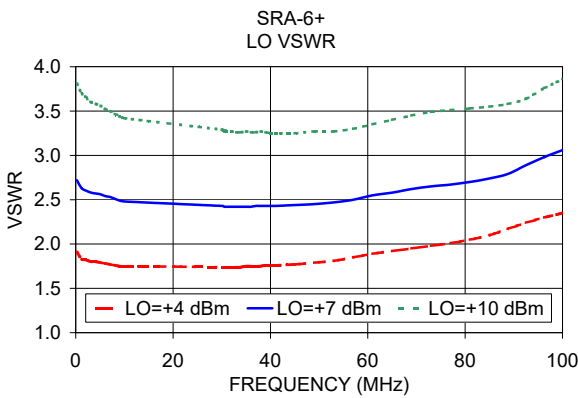
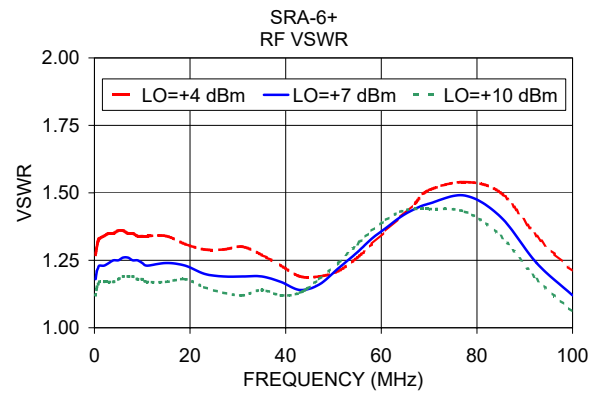
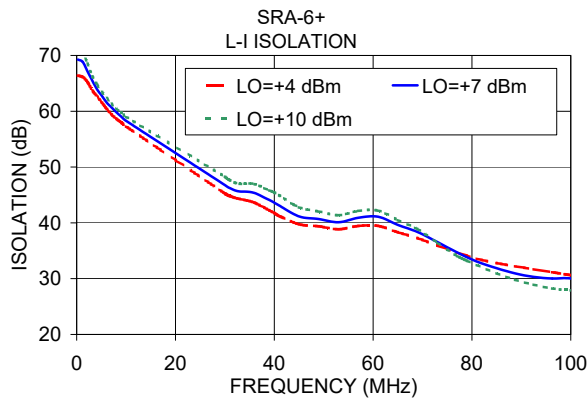
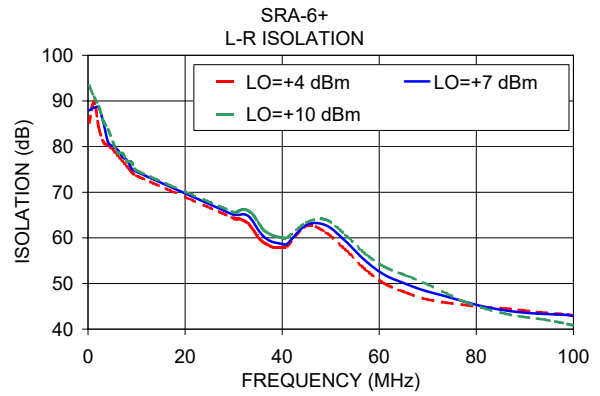
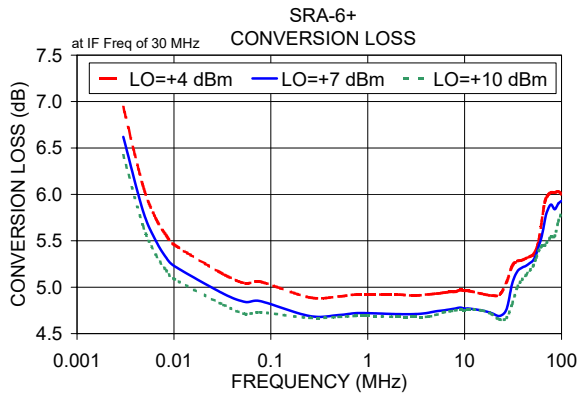
### Electrical Schematic



### Notes

- Performance and quality attributes and conditions not expressly stated in this specification document are intended to be excluded and do not form a part of this specification document.
- Electrical specifications and performance data contained in this specification document are based on Mini-Circuit's applicable established test performance criteria and measurement instructions.
- The parts covered by this specification document are subject to Mini-Circuits standard limited warranty and terms and conditions (collectively, "Standard Terms"); Purchasers of this part are entitled to the rights and benefits contained therein. For a full statement of the Standard Terms and the exclusive rights and remedies thereunder, please visit Mini-Circuits' website at [www.minicircuits.com/MCLStore/terms.jsp](http://www.minicircuits.com/MCLStore/terms.jsp)





**Notes**

- A. Performance and quality attributes and conditions not expressly stated in this specification document are intended to be excluded and do not form a part of this specification document.
- B. Electrical specifications and performance data contained in this specification document are based on Mini-Circuit's applicable established test performance criteria and measurement instructions.
- C. The parts covered by this specification document are subject to Mini-Circuits standard limited warranty and terms and conditions (collectively, "Standard Terms"); Purchasers of this part are entitled to the rights and benefits contained therein. For a full statement of the Standard Terms and the exclusive rights and remedies thereunder, please visit Mini-Circuits' website at [www.minicircuits.com/MCLStore/terms.jsp](http://www.minicircuits.com/MCLStore/terms.jsp)

