

Surface Mount Frequency Mixer

SCM-2500+

Level 7 (LO Power +7 dBm) 500 to 2500 MHz



Generic photo used for illustration purposes only
CASE STYLE: YY109

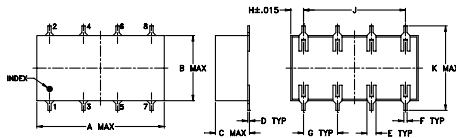
Maximum Ratings

Operating Temperature	-40°C to 85°C
Storage Temperature	-55°C to 100°C
RF Power	50mW
IF Current	40mA
Permanent damage may occur if any of these limits are exceeded.	

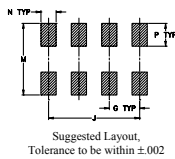
Pin Connections

LO	1
RF	8
IF	3
GROUND	2,4,5,6,7

Outline Drawing



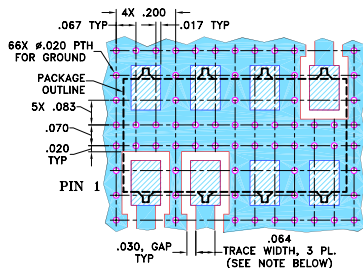
PCB Land Pattern



Outline Dimensions (inch/mm)

A	B	C	D	E	F	G
.75	.38	.20	.010	.050	.020	.200
19.05	9.65	5.08	0.25	1.27	0.51	5.08
H	J	K	M	N	P	wt
.075	.600	.720	.740	.100	.150	grams
1.91	15.24	18.29	18.80	2.54	3.81	1.6

Demo Board MCL P/N: TB-171 Suggested PCB Layout (PL-130)



- NOTES: 1. TRACE WIDTH IS SHOWN FOR ROGERS RO4350B WITH DIELECTRIC THICKNESS 0.030 ± 0.002 ; COPPER: 1/2 OZ. EACH SIDE. FOR OTHER MATERIALS TRACE WIDTH MAY NEED TO BE MODIFIED.
2. BOTTOM SIDE OF THE PCB IS CONTINUOUS GROUND PLANE.
■ DENOTES PCB COPPER LAYOUT WITH SMOBC (SOLDER MASK OVER BARE COPPER)
■ DENOTES COPPER LAND PATTERN FREE OF SOLDER MASK

Notes

- A. Performance and quality attributes and conditions not expressly stated in this specification document are intended to be excluded and do not form a part of this specification document.
B. Electrical specifications and performance data contained in this specification document are based on Mini-Circuit's applicable established test performance criteria and measurement instructions.
C. The parts covered by this specification document are subject to Mini-Circuit's standard limited warranty and terms and conditions (collectively, "Standard Terms"); Purchasers of this part are entitled to the rights and benefits contained therein. For a full statement of the Standard Terms and the exclusive rights and remedies thereunder, please visit Mini-Circuit's website at www.minicircuits.com/MCLStore/terms.jsp

Features

- low conversion loss, 5.88 dB typ.
- wide bandwidth, 500 to 2500 MHz
- high L-R isolation, 35 dB typ.

Applications

- UHF
- cellular
- satellite distribution
- GPS/PCS

Electrical Specifications

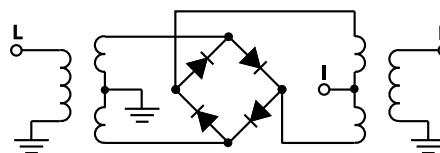
FREQUENCY (MHz)	CONVERSION LOSS (dB)	LO-RF ISOLATION (dB)		LO-IF ISOLATION (dB)		IP3 at center band (dBm)
		Typ.	Min.	Typ.	Min.	
500-2500	DC-500	5.88	.08	6.9	10	13

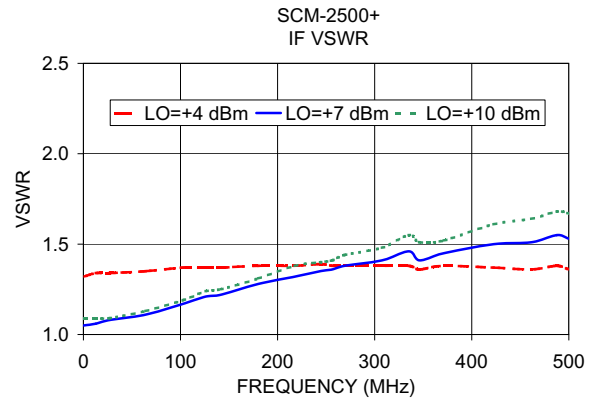
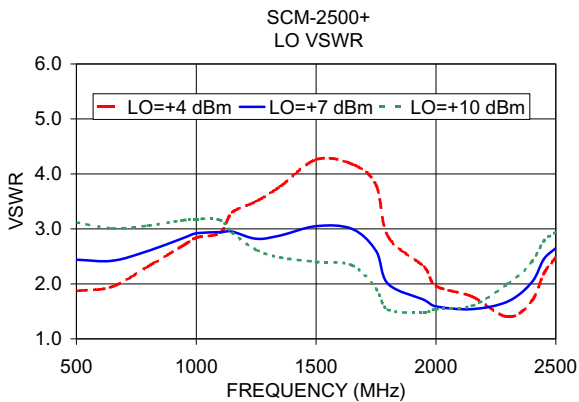
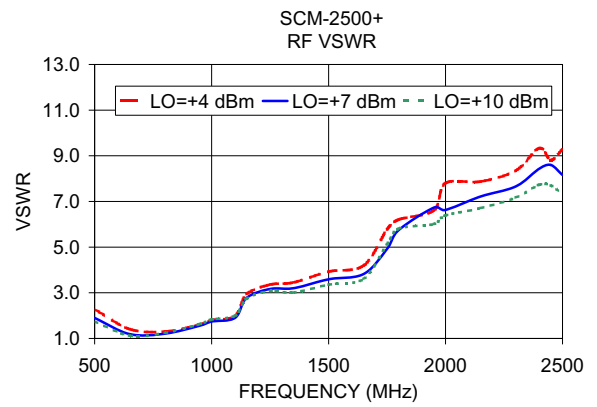
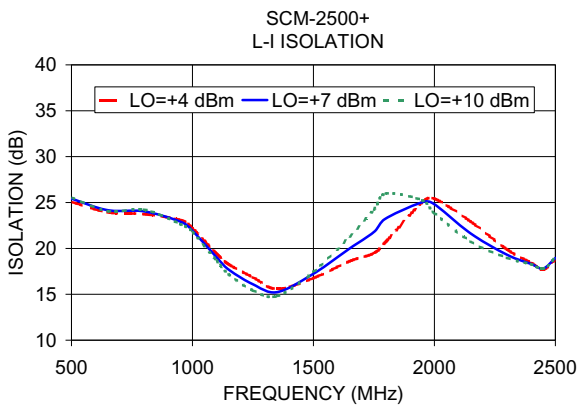
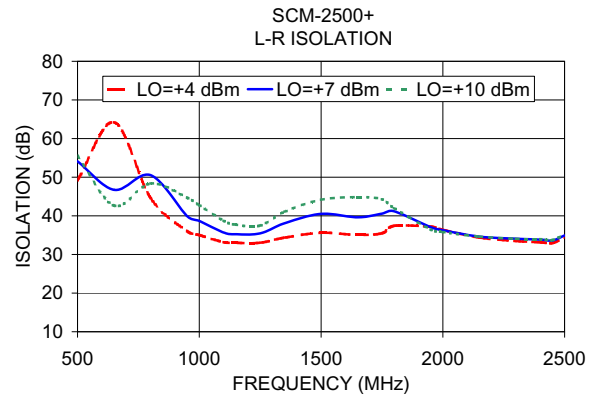
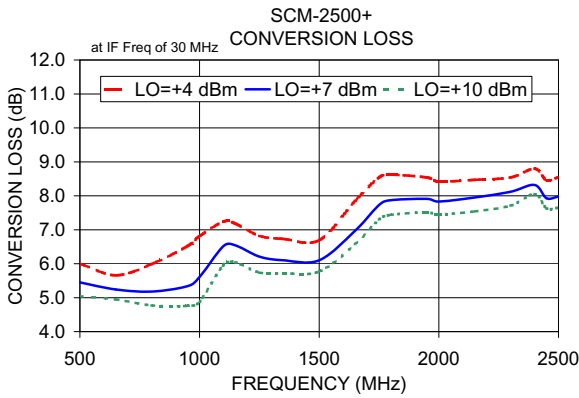
1 dB COMP: +1 dBm typ.
m= mid band [$2f_L$ to $f_U/2$]

Typical Performance Data

Frequency (MHz)		Conversion Loss (dB)	Isolation L-R (dB)	Isolation L-I (dB)	VSWR RF Port (:1)	VSWR LO Port (:1)
RF	LO	LO +7dBm	LO +7dBm	LO +7dBm	LO +7dBm	LO +7dBm
500.00	530.00	5.45	54.10	25.42	1.90	2.44
650.00	680.00	5.24	46.72	24.17	1.19	2.42
800.00	830.00	5.18	50.53	24.04	1.21	2.60
950.00	980.00	5.34	39.92	22.92	1.56	2.84
1000.00	1030.00	5.61	38.68	21.93	1.74	2.92
1100.00	1070.00	6.52	35.67	19.02	1.90	2.94
1150.00	1120.00	6.54	35.25	17.69	2.78	2.95
1250.00	1220.00	6.21	35.47	16.09	3.17	2.82
1350.00	1320.00	6.10	38.09	15.24	3.20	2.88
1500.00	1470.00	6.10	40.51	17.24	3.59	3.05
1650.00	1620.00	6.97	39.61	20.00	3.82	3.00
1750.00	1720.00	7.73	40.56	21.79	4.92	2.60
1800.00	1770.00	7.87	41.20	23.27	5.75	2.00
1950.00	1920.00	7.91	37.08	25.03	6.73	1.71
2000.00	1970.00	7.83	36.28	24.82	6.63	1.59
2150.00	2120.00	7.95	34.61	21.63	7.22	1.54
2300.00	2270.00	8.12	34.07	19.31	7.66	1.68
2400.00	2370.00	8.32	33.85	18.30	8.43	2.03
2450.00	2420.00	7.93	33.63	17.81	8.60	2.45
2500.00	2470.00	7.98	34.92	18.95	8.16	2.65

Electrical Schematic





Notes

- A. Performance and quality attributes and conditions not expressly stated in this specification document are intended to be excluded and do not form a part of this specification document.
- B. Electrical specifications and performance data contained in this specification document are based on Mini-Circuit's applicable established test performance criteria and measurement instructions.
- C. The parts covered by this specification document are subject to Mini-Circuits standard limited warranty and terms and conditions (collectively, "Standard Terms"); Purchasers of this part are entitled to the rights and benefits contained therein. For a full statement of the Standard Terms and the exclusive rights and remedies thereunder, please visit Mini-Circuits' website at www.minicircuits.com/MCLStore/terms.jsp

