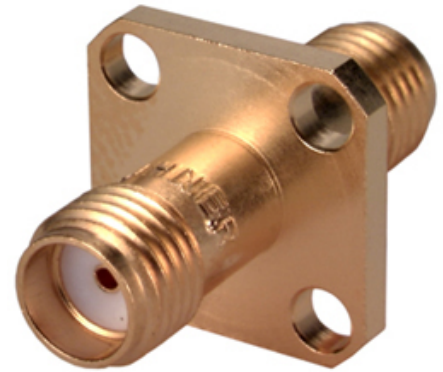


## Within Series Adaptor 37\_SMA-50-0-1/111\_N

### Description

Panel adaptor jack/jack, flange mount  
SMA jack (female) / SMA jack (female)

Interface standard  
Series SMA - IEC 60169-15\_MIL-STD-348A/310\_CECC 22110



### Technical Data

#### Electrical Data

Impedance	50 Ω
Interface frequency max.	18 GHz
Frequency range	DC to 18 GHz
Return loss	≥ 20 dB

#### Mechanical Data

Number of matings	500
Weight	0.0043 kg

#### Environmental Data

Operating temperature	-65 °C to 165 °C
2011/65/EU (RoHS - including 2015/863 and 2017/2102)	compliant

#### Material Data

Interface - SMA jack (female)

Piece Parts	Material	Surface Plating
Centre contact	Copper Beryllium Alloy	Gold Plating (Nickel underplated)
Outer contact	Copper Beryllium Alloy	Gold Plating (Nickel underplated)
Body	Copper Beryllium Alloy	Gold Plating (Nickel underplated)
Insulator	PFA / PTFE	

Interface - SMA jack (female)

Piece Parts	Material	Surface Plating
Centre contact	Copper Beryllium Alloy	Gold Plating (Nickel underplated)
Outer contact	Copper Beryllium Alloy	Gold Plating (Nickel underplated)
Body	Copper Beryllium Alloy	Gold Plating (Nickel underplated)
Insulator	PFA / PTFE	

### Related Documents

Outline drawing	DOU-00013522
Mounting hole	DOU-00008784

### Ordering Information

Single package	37_SMA-50-0-1/111_NE
----------------	----------------------